

Chapter 1

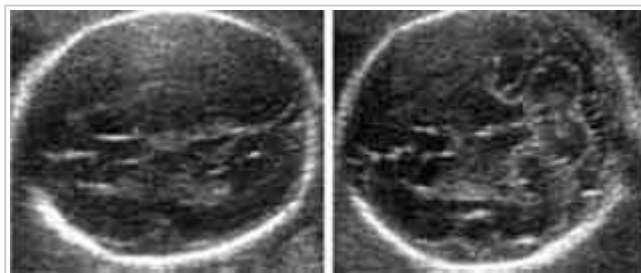
Standard views for examination of the fetus

Skull

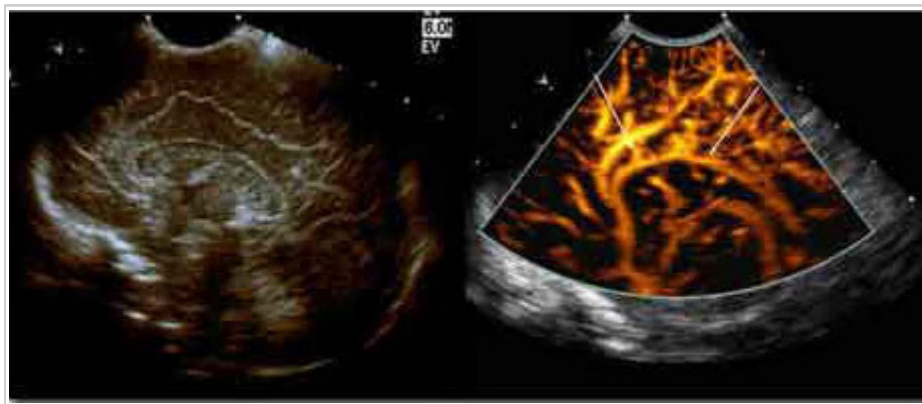
Examination of integrity and normal shape, and measurement of biparietal diameter and head circumference.

Brain

Examination of cerebral ventricles, choroid plexuses, mid-brain, posterior fossa (cerebellum and cisterna magna), and measurement of the anterior and posterior horns of the lateral ventricles.



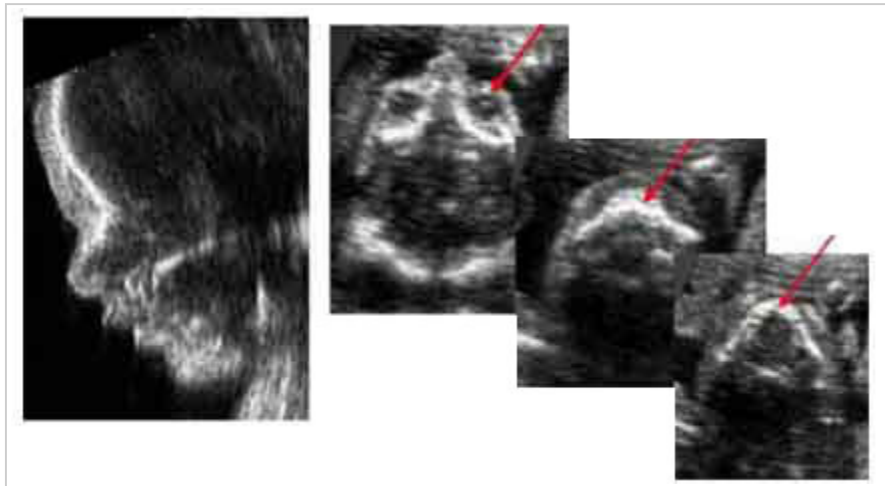
BPD Plane - Transverse view (left). Transverse Cerebellar Diameter Plane - Transverse view (right)



Sagittal View (Transvaginal Scan): demonstrating transvaginal + color Doppler: pericallosal artery

Face

Examination of the profile, orbits and upper lip.

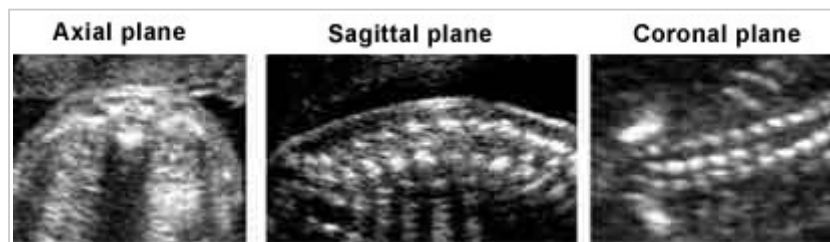


Neck

Measurement of nuchal fold thickness.

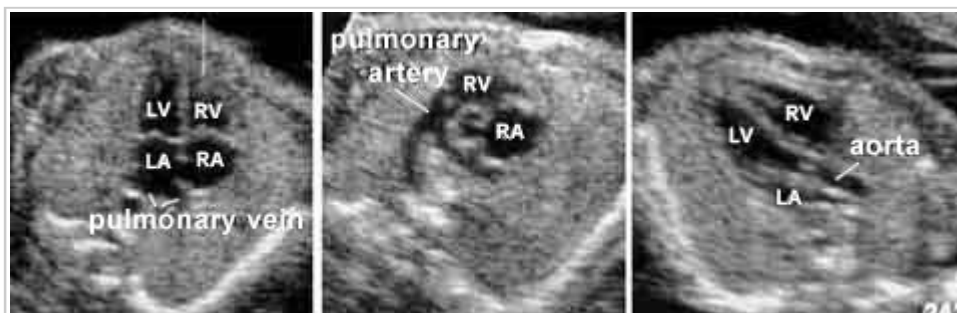
Spine

Examination both longitudinally and transversely.



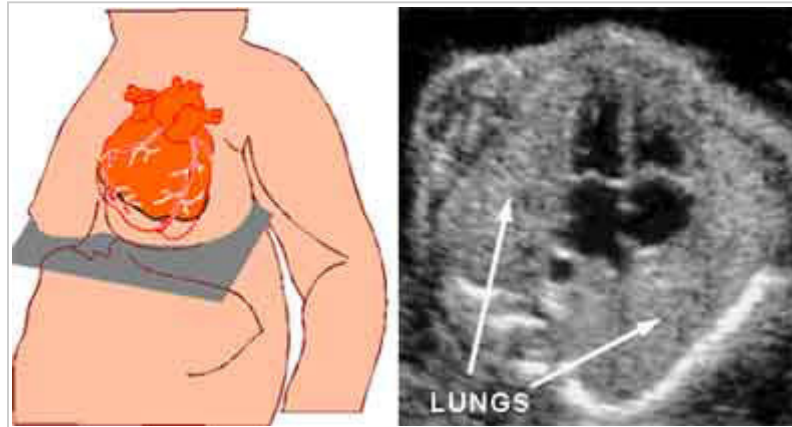
Heart

Examination of rate and rhythm, four-chamber view, and outflow tracts.



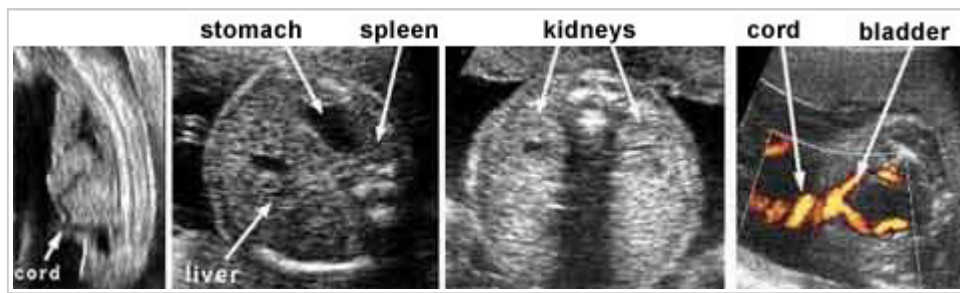
Thorax

Examination of the shape of the thorax, the lungs and diaphragm.



Abdomen

Examination of the stomach, liver, kidneys, bladder, abdominal wall and umbilicus, and measurement of abdominal circumference.



Limbs

Examination of the femur, tibia and fibula, humerus, radius and ulna, hands and feet (including shape and echogenicity of long bones and movement of joints), and measurement of femur length.

